



## NEW PATH VILLAGES

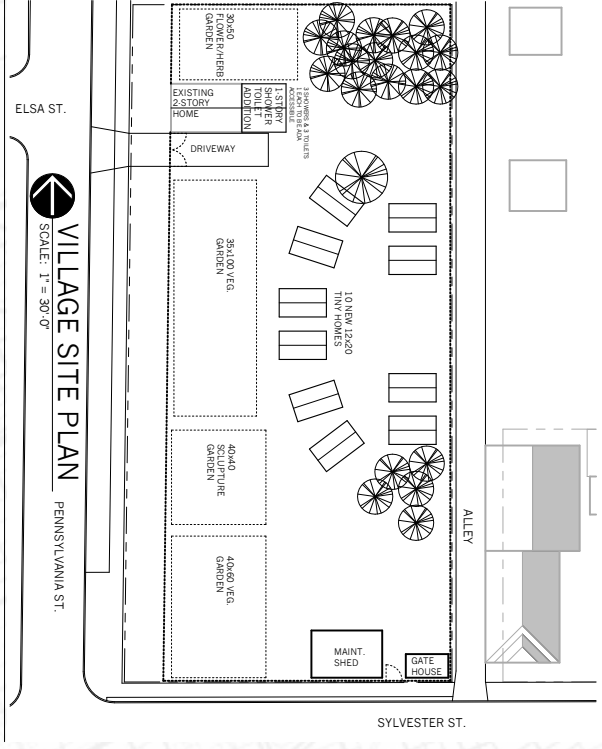
New Path Villages is an emergency shelter type micro-housing community located on the east side of Detroit. It will be opened to serve all otherwise unhoused individuals and couples, including same-sex couples, transgender / LGBTQ people.

This type of village offers a cost-effective means for providing shelter options while preserving individual autonomy, privacy and responsibility. This Village will change people from being seen as unrelated homeless individuals, to being part of a community of people temporarily displaced.

Having the Village run by residents themselves gives people a sense of agency, communal accountability, self respect and worth that most common space shelters cannot offer. The village will be run by the people who live in it, with oversight and support provided by the New Path Advisory Committee.

The Living Quarters will be tiny frame built homes, approximately 240 square feet in size. They will be supported by shared facilities for cooking, restrooms, laundry and gathering areas. New Path Village is built with Community in Mind – Because each home is only so big (human sized) – residents are oriented to spend more time outside of their personal dwellings and in common spaces. This is an opportunity for healing as many have experienced isolation throughout their time on the streets and in large, open Shelter Facilities.

Each structure will be composed of pre-manufactured panels. Residents will take part in the construction of these dwellings. Each structure will have an electrical line and a heating/cooling source.



This program's goal is to ensure residents' basic needs — stability, security, privacy, and the ability to stay warm and dry are met; a vast improvement from being on the streets or in a shelter.

**Self-governance** is a core value of New Path Villages. The success of the Village rests on the participation of those who live here.

1) Weekly meetings for all residents to discuss plans and issues including expulsion.

2) New Path Villages will have a Council to uphold orderly management of the village. Those elected are given the task of responding to incidents when criminal / violent behavior occurs.

3) New Path Village Advisory Council will be in place to provide oversight and guidance with discretion.







## TRAINING PROGRAMS

In addition to providing housing, the village will incorporate several training programs on site designed to:

**A)** Teach residents skills to help them gain future employment. We will have a large community garden on the property. We will also have a machine shop for both metal and wood working.

**B)** To generate income to sustain the village.

All residents will be urged to attend training sessions in these and other skills. We will also bring in trades people and artists to oversee the creation of large scale art projects to be built by the residents as part of their skill training. These art pieces will be sold to local businesses and individuals to help fund the village.

## VILLAGE SECURITY

The Front Desk is the only gateway in and out of the village and shall remain secure. **Staffing the front desk is one of the most important duties.** Only residents and New Path Villages Volunteers may enter the village unaccompanied.

**Weapons / Drugs / Alcohol are not allowed on the New Path Villages site.**

\*New Path Villages has been given permission to use all imagery of Beloved Community Village



## CONTACT INFORMATION

Please reach out for further information.

**Mike Willenborg - Danielle (Doxie) Kaltz**

**(586) 623-7654**

**[mike@newpathvillages.org](mailto:mike@newpathvillages.org)**

**[doxie@newpathvillages.org](mailto:doxie@newpathvillages.org)**

A 501(c)3 Non Profit



# New Path Villages